



---

## UNDP/GEF PROJECT ENTITLED “REDUCING ENVIRONMENTAL STRESS IN THE YELLOW SEA LARGE MARINE ECOSYSTEM”

---

UNDP/GEF/YS/RWG-I.3/10  
Date: 28 August 2006  
English only

### **Third Meeting of the Regional Working Group for the Investment Component** *Dalian, China, 9-12 September 2006*

#### **Progress Report on National Co-ordination**

The latest reports on the status and progress of national co-ordination were prepared by the National Project Co-ordinators and attached as part of this meeting document.

For reference, the following is an excerpt from the Project Manager’s Report presented during the Second Project Steering Committee Meeting (Kunming, China, December 2005). The Report summarises the status of national co-ordination in China and Korea as of then, based on the information provided by the National Project Co-ordinators for the Second Regional Working Group Meeting for the Investment Component (Jeju, Korea, November 2005).

*The Inter-ministerial Co-ordinating Committee (IMCC) and National Working Groups (NWGs) for the five project components (Biodiversity, Ecosystem, Fisheries, Investment, Pollution) were established in both China and Korea. A National Project Coordinator (NPC) for each country was designated by the respective National Focal Point.*

*In China, in addition to the above entities, a National Project Management Office was established in the Department of International Co-operation at the State Oceanic Administration (SOA) which is headed by the NPC. The Local Project Management Offices were also established.*

*In Korea, the NWG meetings have regularly been held to discuss, co-ordinate, and prepare for the Regional Working Group meetings and the Regional Scientific and Technical Panel (RSTP) meeting.*

*For better co-ordination and successful project implementation, as discussed in the Second Regional Working Group – Investment Meeting, the following activities are necessary:*

- *Inviting more institutions to participate in the activities of the national working groups, including local governments, local communities, and NGOs;*
- *Securing a relatively stable participation of the members to the respective meetings of the regional working groups; and*

- *Enhancing national co-ordination of relevant ministries in the implementation of the project.*

*(Report of the Second Meeting of the Project Steering Committee)*

# **Progress Report on National Coordination**

People's Republic of China

For the past year, our office at the SOA has done several matters with regard to the work that needs national coordination, such as the cooperative cruise, small grant project, the monitoring of the implementation of the contract between the PMO and institutions at home concerning the Data and Information Collection for the Yellow Sea, the involvement of DPRK in the YSLME project, as well as the soft ware issues. I will just report to the meeting about the above with more information as the following.

## **I. Cooperative Cruise Coordination**

As we all know, there are something what the cruise will cover need the consultation among the agencies and institutions at home. Since the project document drafted as early as 10 years back when it was finalized and approved by the GEF, there are things that changed, so are the people. Thus, the coordination among those domestic agencies is needed. From last November on, we have convened several domestic meetings for that coordination. The representatives from the Ministry of Foreign Affairs, Ministry of Agriculture, State Oceanic Administration, and their institutes as well as relevant departments concerned attended meeting. The meeting focused on the subjects the cruise would conduct and the selection of stations to be investigated. The similar coordination meetings were held two more times followed the last November meeting.

## **II. Small Grant Projects**

Regarding the publicity for the application of the small grant projects, our office at SOA organized different institutions from government agencies, universities and academies to apply. We just sent them a circular regarding the project, notifying the website for detailed information. Before submitting to the PMO, we required them to send application to SOA for review. Our office finally submitted about 5 proposals out of 13 we received. And 4 proposals were finally approved by PMO. The four projects are: the flack and education to public for the ecosystem protection and managing mode around the north Yellow Sea area; Community-based conservation of coastal ecology in Dalian, China; Liyashan oyster reef ecosystem protection, Nantong, China, Welcome to the green Olympics and protect the Yellow Sea surrounding us.

## **III. Contracts for Data and Information Collection**

As the basic information collection concerning the Yellow Sea from the previous work, the Yellow Sea Fisheries Institute of the Ministry of Agriculture was contracted with PMO entitled UNDE/GEF Yellow Sea Project's China Fishery's Component Data and Information Collection, the National Marine Environmental

Monitoring Centre was contracted with PMO entitled UNDE/GEF Yellow Sea Project's China Pollution Component Data and Information Collection Activity and the contract with the First Institute of Oceanography, SOA was entitled UNDE/GEF Yellow Sea Project's China Biodiversity-related and Ecosystem-related Data and Information collection. Our office has monitored the progress to ensure the implementation and timely completion.

#### **IV. Involvement of DPRK into the YELME project**

Due to the bilateral cooperative relation with the DPR Korea in field of Ocean, SOA committed to assist to explore the possible participation by DPRK in the project. Followed up to the trip to PY to have a face to face talk about the matter, Mr. Zhu Wenxi, Director, Department of International Cooperation, SOA was invited to visit Mr. Namchol, Director of International Relations, State Hydrological and Meteorological Administration of DPRK for further discussion regarding the matter. We were told that DPRK will formally participated in the Project and an approval letter is now in the process of preparation.

**PROGRESS REPORT**  
**- 1 January ~ 31 August 2006 -**

**Hyung Tack Huh**  
**National Project Coordinator/Korea, YSLME**

## **1. FOREWORD**

This Progress Report covers progress made, by the National Project Coordinating Unit of Korea for YSLME, during the period between January and August 2006.

Activities for the first half of the Year 2006 have mainly been focused on the materializing the Cooperative Study Cruise (Spring Cruise planned for May-June 2006), the China-Korea Parliamentary Seminar on YSLME (27~30 March, Qingdao, China), coordination for data/information collection activities for Fisheries, Ecosystem, Pollution and Biodiversity Groups, reinforcement of the National Working Groups, etc.

National Working Group Chairs meetings (February, April, May, August), Inter-Ministerial Coordinating Committee (IMCC) Meeting (February, August), Special Project Steering Committee Meeting (April) and Technical Meetings (April, July) have been held during the period.

## **2. ACTIVITIES AND RESULTS**

### **A. MEETINGS AND WORKSHOPS**

#### **JANUARY**

- \* NEAR-GOOS Coordinating Committee Meeting, 16-18 January, Busan, Korea:  
Participated by NPC as an observer, Cooperation with other organizations/projects.
- \* YSLME Workshop: 19 January, KORDI.
- \* Consultation Meeting on Cooperation with DPRK: 20 January, Ministry of Maritime Affairs & Fisheries (MOMAF): Attended by Project manager, officials from several Ministries, Experts from KMI, KORDI etc., NPC.

#### **FEBRUARY**

- \* Seminar on South-North Korean Cooperation: 15 February, Korea Maritime Institute (KMI).
- \* National Working Group Chairs Meeting (1<sup>st</sup>/2006): 20 February, Seoul.
- \* Preparatory Meeting for the China-Korea Parliamentary Seminar on YSLME: 21 February, National Assembly of Korea.
- \* Inter-Ministerial Coordinating Committee (IMCC) Meeting: 28 February, Ministry of Foreign Affairs & Trade (MOFAT).

#### **MARCH**

- \* Preparatory Meeting for the China-Korea Parliamentary Seminar on YSLME: 7 March, National Assembly of Korea (Congressman Dr. Jong Gil Je).
- \* China-Korea Parliamentary Seminar on YSLME:  
The Regional Conference on Parliamentary Roles in Protection of Marine Environment and Sustainable Use of Marine Resources in the Yellow Sea. 27-30 March, Qingdao, China.

#### **APRIL**

- \* National Working Group Chairs Meeting (2<sup>nd</sup>/2006): 5 April, Seoul.
- \* Preparatory Meeting for the Special Project Steering Committee (PSC): 19 April, Ministry of Foreign Affairs & Trade, Korea.
- \* Special PSC/Technical Meeting: 25-27 April, Qingdao, China.

## **MAY**

- \* National Working Group Chairs Meeting (3<sup>rd</sup>/2006): 4 May, Seoul.
- \* Meeting on the Spring Cooperative Study Cruise: 11 May, Ministry of Foreign Affairs & Trade. Attended by UNDP/Korea, PMO, MOFAT, MOMAF, NPC.
- \* Experts Meeting on Spring Cruise: 16 May, Busan. Attended by 12 Korean marine scientists representing universities and ocean institutions.

## **JUNE**

- \* NOWPAP Workshop on Marine Litters: 8 June, Incheon.
- \* YSLME Workshop for NGOs: 15-15 June, KORDI.
- \* The 39<sup>th</sup> Executive Council of Intergovernmental Oceanographic Commission (IOC/EC): 19-28 June, UNESCO, Paris. Cooperation with other organizations and programs (WESTPAC, PICES, PEMSEA, NEAR-GOOS, etc).

## **JULY**

- \* The 3<sup>rd</sup> Technical Meeting for the Cruise: 11-12 July, Ansan, Korea.  
Finalized the cruise schedule: changed the spring cruise to summer cruise (1-30 September); fixed 24 sample sharing stations.

## **AUGUST**

- \* National Working Group Chairs Meeting (4<sup>th</sup>/2006): 9 August, Seoul.
- \* 4<sup>th</sup> Inter-Ministerial Coordinating Committee Meeting: 29 August, Seoul.

## **B. ACTIVITIES AND RESULTS**

### **i) Coordination for the Cooperative Study Cruise:**

The Cooperative Study Cruise has been a major issue in the implementation of YSLME Project. Over the cruise schedule, survey components, number and location of sampling stations, and sample and data sharing, there have been existed some discords between the participating parties. Through a number of formal and informal meetings and discussions, details of the Cruise programs have been coordinated and finalized.

- a) Cruise Schedule: Winter Cruise has been postponed from February 2006 to January 2007; Spring Cruise from May-June 2006 to Summer Cruise, September 1-30, 2006
  - Summer Cruise:
    - Survey Components: Sampling and survey will be conducted in the fields of ecosystem and pollution; surveys for fisheries and biodiversity will not be performed during the September cruise.
    - Sampling Stations: 72 stations. Among 71 sampling stations fixed at the 2<sup>nd</sup> RSTP and 2<sup>nd</sup> PSC Meetings (15-20 December, Kunming, China), two stations (N3, A6) have been deleted, while three stations (A1, A2, A3) been added totaling to 72

stations.

-Sharing of Samples : Samples from 24 out of 72 stations will be shared by both China and Korea for inter-calibration and inter-comparison (see Station Map).

-Sample Analysis: All the samples for the following 5 variables will be transferred to Korea for further analysis: HPLC, Primary productivity, Benthos, Pico-plankton and Micro-zooplankton.

-Scientists on Board: 21 scientists (14 Ecosystem, 7 pollution) will be on board during the cruise.

-Research Vessel: R/V Hai Jian 17 (1,111 GTs), North Sea Branch of SOA, China.

● **Coordinating Meetings for the Cruise:**

-Technical Meetings: Two technical meetings have been held to coordinate the Spring (Summer) Cruise;

2<sup>nd</sup> Technical Meeting, 26-27 April 2006, Qingdao, China

3<sup>rd</sup> Technical Meeting, 11-12 July 2006, Aansan, Korea

-Special Project Steering Committee Meeting, 25 April 2006, Qingdao.

## **ii) Coordination in Data/Information Collection:**

Coordination in the Data and information collection activities have been made in the four components of fisheries, ecosystem, pollution and biodiversity.

Final reports of fisheries, ecosystem and pollution components have been submitted; biodiversity report is unfinished as of 31 August.

## **iii) National Meeting Arrangements:**

National Working Group (NWG) Chairs meetings and Inter-Ministerial Coordinating Committee (IMCC) meetings have been held to review and discuss the progress of the project and the cooperative study cruises:

a) National Working Group Chairs meetings: Four meetings of the National Working Group Chairs have been held, respectively, in February 20, April 5, May 4, and August 9, 2006.

b) Inter-Ministerial Coordinating Committee meetings: 3<sup>rd</sup> and 4<sup>th</sup> IMCC meetings have been held; 3<sup>rd</sup> IMCC, 28 February and 4<sup>th</sup> on 29 August 2006.

## **iv) Reinforcement of the National Working Groups:**

Members of the National Working Groups have been re-evaluated and partly reinforced. Number of experts in the five components of the NWGs has been increased from 40 to 53 by adding 13 new members including 9 replacement.

## **v) China-Korea Parliamentary Seminar on YSLME:**

By recognizing the importance of the seminar in the implementation of YSLME project, efforts were made to coordinate and cooperate with the relevant ministries and institutions in the preparation of the seminar.

The seminar has been held at the Huiquan Dynasty Hotel in Qingdao, China, 28-30 March 2006. There have been 50 participants including 14 Congress members from both countries and 31 scientists/professors and government officials.

The Seminar recognized the Yellow Sea as "a sea of friendship, peace, cooperation and prosperity", and agreed to hold annually as an "informal meeting" alternately in both countries.

## **vi) Institutional Arrangements for the 3<sup>rd</sup> RWG meetings:**

For the 3<sup>rd</sup> Regional Working Group meetings to be held during September - October, coordinations were made to review the activities done since the 2<sup>nd</sup> RWGs and evaluate the agenda items of the meeting by each component, and to nominate proper delegates to the 3<sup>rd</sup> RWGs.

- Nominated delegates are:

- Fisheries: Dr. Inja Yeon (NFRDI), Dr. Do- Hoon Kim (NFRDI),  
Dr. In-Kwon Jang (NFRDI), Dr. Myoung Ho Sohn (NFRDI),  
Dr. Ik-Kyo Chung (Pusan National University)
- Pollution: Dr. Jae-Ryong Oh (KORDI), Dr. Hee Gu Choi (NFRDI),  
Dr. Hak-Gyoon Kim (Pukyung National University),  
Dr. Kyung Hoon Shin (Hanyang University)
- Ecosystem: Dr. Sinjae Yoo (KORDI), Dr. Daeseok Kang (Pukyung National University),  
Dr. Jaesang Hong (Inha University),  
Dr. Seung Heo (NFRDI)
- Biodiversity: Dr. Yoon Lee (NFRDI), Dr. Kyung Suk Seo (KIMTPC),  
Dr. Tae-Won Lee (Chungnam National University),  
Dr. Chang Hee Lee (KEI)
- Investment: Dr. Dong-Oh Cho (KMI), Dr. Seok Jae Kwon (KORDI),  
Dr. Suh-Yong Chung (Myungji University),  
Dr. Hoi-Soo Jung (KORDI).

### **3. New Developments, Difficulties and Problems:**

- a) Delay in the Cooperative Study Cruise:  
Two joint cruises planned for January (winter cruise) and May-June 2006 (spring cruise) have been delayed till the end of August, and it appears that the cruise would not be able to launch as scheduled mainly due to discord with the survey methods between two participating countries.
- b) Sharing of Data and Samples:  
There have existed an outstanding differences in the ways of data and sample sharing by two participating countries. Korea wants that all data and samples from the joint cruises be equally shared for the basin-wise analysis and inter-calibration, while China does not agree.  
Though it was agreed that samples from 24 survey stations out of 72 stations will be shared by two countries, it remains to be discussed further for the improvement.
- c) Reduction of Survey Components:  
It was decided that sampling and survey during the spring cruise will be conducted for two components, ecosystem and pollution, and surveys for fisheries and biodiversity will not be performed.
- d) Difficulties in Nominating Delegates to the RWG meetings:  
Difficulties still exist in nominating the delegates to the RWG meetings as many members of the national working groups were not available in participating in the RWG meetings. To maintain continuity and expertise in the RWGs, it would be necessary to find a measure at the national and institutional levels.

### **4. Remarks/ Lesson Learned:**

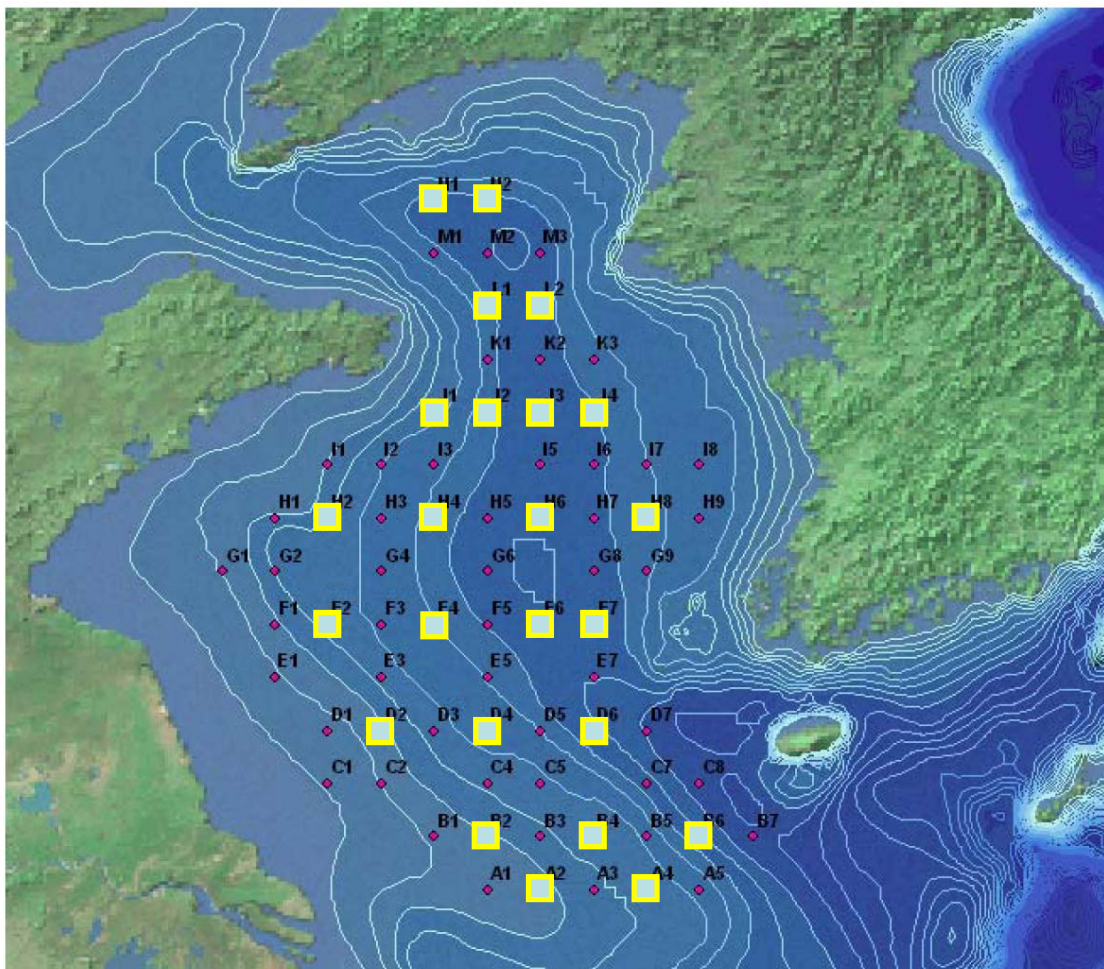
- a) It is absolutely necessary that implementing agencies (countries) of the project should have signed on the Memorandum of Agreement for the cooperative study cruises well ahead of the cruise schedule.
- b) It is felt that the cruise without fisheries component may considerably impair the



goals of the YSLME project. Therefore, both sides should make efforts to include fisheries component in the next cruises.

- c) To encourage and promote the better involvement by the regional/national experts in the Regional Working Group meetings, it appears to be necessary to provide some incentives for the participants of RWG meetings. One of the incentives could be providing 'per diem' to the experts which should be expedited through the next Project Steering Committee meeting.

Date: 31 August 2006



\* Stations in yellow square: Samples to be shared

**Map. Sampling Stations for the Cooperative Study Cruise, September 2006, YSLME.**